

The logo for Zyple Software, featuring the word "Zyple" in a large, blue, stylized font and the word "SOFTWARE" in a smaller, green, sans-serif font below it.

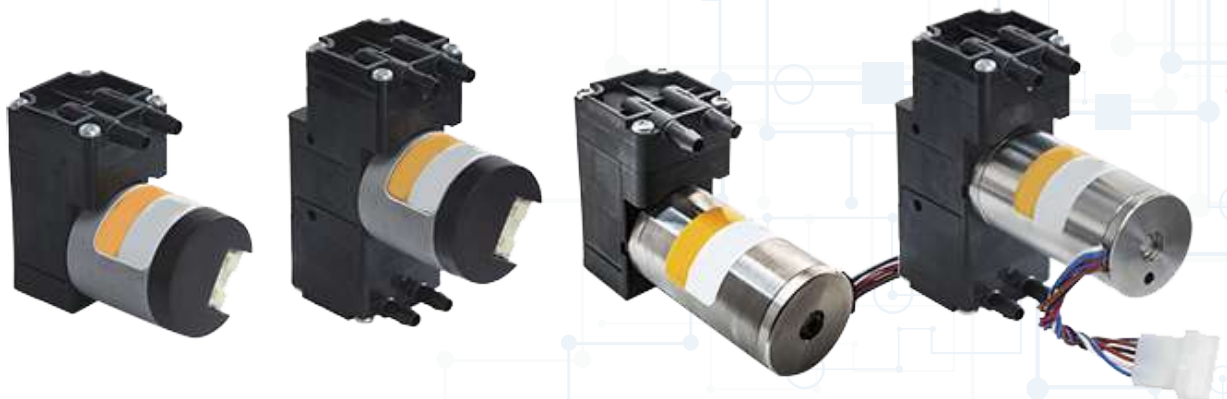
Zyple
SOFTWARE

**The
Best
ERP
Solution**



www.zyplesoft.com

“SAP Business One ERP is the most suitable and affordable ERP for the discrete manufacturing industries like Auto / Auto Ancillaries, Aerospace, Industrial Equipment, Engineered products, Electrical and Electronics, Telecommunication products, etc. Can specifically configure to resolve the industries challenges. It is the best business-integrated solution for the SCM (Supply Chain Management), PPC Production Planning and Control, MES (Manufacturing Execution System), IIoT (Industrial Internet of Things) like Machine Data, Man Data collection and analytics through the integrations of equipment and applications like ASRS (Automatic Storage and Retrieval System), Plant Machineries, Utility Equipments, Bank and Banking Applications, Vendor Evaluations, HRMS, be it Engineered to Order, Job Shop, Mass Production, High Volume High Mix, Low Volume High Mix manufacturing environments. The best is it reflects the unique business legacy in a true sense indeed, to enable successful businesses practice to compete in the market you serve in to become the most sustainable and resilient to growth.”



How SAP Business One Aids the Discrete Industries?

Real-time precise business information to take timely actions



Business operations flexibility & competitiveness



Improve productivity holistically



Profits Risk Mitigation



Customer Experience Connected Truly



Just in Time Inventory to ensure seamless cash flow



Evaluate new business opportunities with data evidence



Reap Cost of Quality

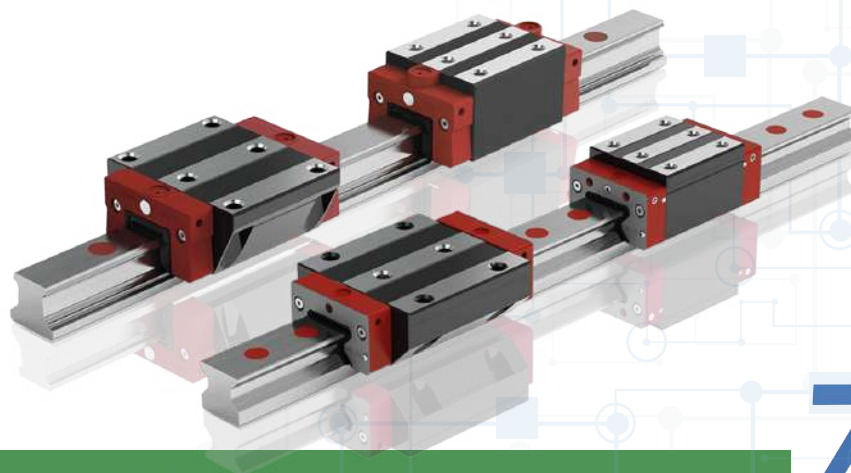


Key-Value Enabler

Business One is a comprehensive business solution that covers every discrete manufacturing need. It provides a seamless workflow to manage discrete manufacturing processes, starting from Customer Relationship Management (CRM) [enquiry to sales and service], Procurement to Pay, Subcontracting, Production Planning and Control, logistics (Delivery and Shipments), KANBAN, Production Leveling, Capacity and Capability risk mitigation, Inventory Management (Raw Material, Work Inprogress, Materials at Vendor locations, Reconciliation and Yield Management), quality management and full compliance to ISO. SAP Business One is an ideal business solution and best fit for small- to medium-sized discrete manufacturing industries.

Listed below are the 5 most leading value additions for the discrete Manufacturing Industries among all others while selecting the appropriate and best fit ERP.

1. MRP I & MRP II
2. Inventory, Traceability, and Yield
3. BOM & Routing
4. Estimation, Costing and COGS
5. KPI's and Measurements (MRM Analytics Ready)



MRP I & MRP II:

A competent and conversant SAP Business One Partner exploits the built-in features to adapt the current and future requirements quickly and easily to set up, run and process the results for effective Material Resource Planning (MRP-I), and the demonstrates the connectivity in the relation to Manufacturing Resource Planning (MRP-II) with little or more configurations and customisation to reflect your capacity vs capability legacy management into digital (error-free automation of the complex routines into simplest results), along with yield management.

Demand:

Synchronising the MRP I with MRP II in the discrete manufacturing industry is the need of the hour and most challenging task due

to multiple factors and variables of the customer, product, processes, Bill of Material (BOM), Routing (methods of machining, Sequences, alternatives, etc.,) Resource allocation and (Selection Machines and alternatives like labour workgroup skilled, semi-skilled and un-skilled)

Stir:

Although your discrete manufacturing business

is similar to others, your practice (ways and means) is unique and incomparable with others, which is your strong Intellectual Property, whereby sourcing the materials and job work, tools and consumables, production planning and control, inventory and yield management, inclusive of scrap and swarf reconciliation (nonconformance and material scraps) in the process of value addition; changing shape and form of the raw material to finished product is a greater responsibility. The System has to be robust and agile (flexible to

the time) to make the necessary process changes sincerely with time-bound results to satisfy the customers and top management.

Key:

Zyple Software

offering with SAP Business One for discrete manufacturing industries gives you complacent advantages on the MRP I and MRP II the key business processes with exclusive attention to your legacy requirement to react and pro-act with appropriate correction actions and corrective actions to result in ease of operation and sustained results.



Inventory, Traceability & Yield:

Material Batch, heat traceability and Yield management is inevitable (unavoidable) within the SCM (Supply Chain Management) of discrete manufacturing is an essential need to automate and retrieve the data for current and future needs.

Demand:

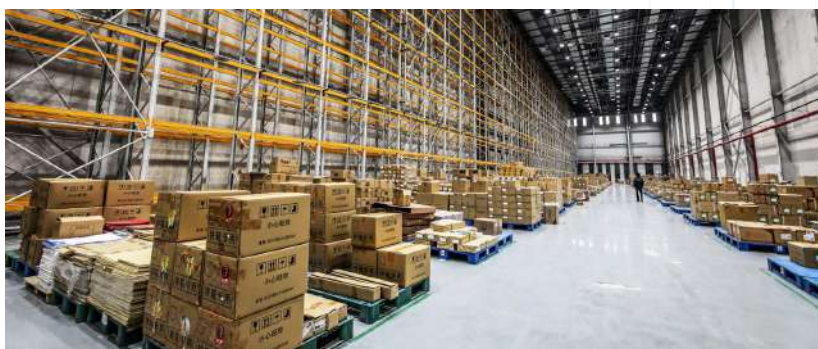
Tracing the material flow, workflow, document flow and change management in the processes are of paramount importance to see through and retrieve to meet and satisfy the business stakeholders, shareholders, customers, government regulatory departments, independent third-party audits so on so forth.

Stir:

Integrating complex material flow, workflow, documents, test reports and records in a single platform and relating them rightly agitates it critically to realise the business sustainability and profitability.

Key:

Zyple software the best SAP Business One Partner ensures and



demonstrates vis-versa traceability to customer Purchase Orders and Sales Invoices with the right relationships with the material procurement documents, batch and heat code, workflow in an effective and efficient drill down

manner

- PO (Material Purchase Order)
- GRN (Goods Receipt Note)
- Batch No (Material Batch Number)
- Heat Code (Material Heat Code)
- Material Certificates
- Production Qty Vs Material Consumption Qty
- Bi-Directional (Purchase Order to Sale Invoice and Vice Versa)
- Lot Traceability
- Lot Recall
- SKU (Stock Keeping Unit Vs Packaging (Single to Multiple))
- Scrap Notes (Swarf - Waste Chips generated)
- Subcontracting Reconciliation (free issued material to job work)
- Material and Product Non-Conformance relations

As the above listed are some of the must requirements to fit with your legacy SOP's

(Standard Operating Procedures) and assure traceability and inventory management is

made easy and fully compliance with the customer as well as statutory and legal compliances. (in a nutshell, retrieve the data in secs)

Zyple
SOFTWARE

BOM & Routing:

Often product BOM is managed with a spreadsheet or different sources independently and at times it is more complex to reconcile the yield with scrap (non-conformance and swarf), and alternative machines or resources used in production planning and control in the supply chain to reconcile the profitability.

Demand:

establishing the raw material, input quantity, by product group and part number, yield variations and swarf and non-conformance accounting at a single source concerning the complexity of engineered to order, make to order and make to stock scenarios are challenging in nature and becomes added complexity to reflect the legacy as well.

Stir:

Bill of Material and Routing consisting of the raw material, resource cost (machine, Labour - Skilled, Semi-Skilled and Un-Skilled), Special processes like surface treatments, heat treatments are becoming the part or product realisation cost (conversion cost) in real-time with accrued cost calculation to relate with Cost Of Goods Sold (COGS) is a mandate for the business leaders to take correction and

corrective actions with desired results. at the same time, where the alternative and multiple BOM and Routing options are made available to realise the part or product delivery to the customer by effectively utilising the resources to satisfy the customer needs further agitate the challenge

Key:

Zyple Software the leading SAP Business One partner offering in Discrete Manufacturing Industries (DMI) solution is a complete suite to BOM and Routing. A custom configurable solution for your business legacy operations that drives sustainability, profitability and growth. It helps you manage raw materials more efficiently, improve yield, reduce the cost of poor quality and increase productivity.

- Raw Material Vs Batch Vs Yield
- Multiple BOM (Alternate BOM's)
- Multiple Routings (Alternate Routings)
- Estimated Yield Vs Actual Yield
- Yield Gain or Loss
- Production Gain or Loss
- Raw Material Loss in Production
- Swarf Generation
- Conformance to Quality

- Non-Conformance to Quality
- FIFO (First-In-First-Out)
- LIFO (Last-In-First-Out)
- Moving Average Cost
- Accrued Cost
- Vendor / Subcontracting Reconciliation

As the raw material conversion progresses, the cost calculation with the yield progresses simultaneously and sequentially is captured in the SAP Business One ERP in real-time. This facilitates the business leaders (management) to take necessary actions with the data evidence.

Zyple MES Hybrid Suit is a supreme add-on designed with MESA 11 standards integrated

with SAP Business One is unlimited licence access installed on the shop floor reveals the following in a real-time.

- People Deployment (Machine Vs Operator)
- Work Deployment (Activity Vs Operator)
- Capacity Vs Load
- Alerts (Run, Idle, Break Down, Yet to Start)
- Tools & Consumables
- Production Part Traceability
- Geology (where the material is on the shop floor)
- Production Qty in Real-Time
- Single Click Approval of Job Card
- OEE Report
- Alerts & Escalations

Estimation, Costing & COGs:

Part or product price estimate and cost calculation (be Should Costing or Activity Based Costing) are adopted by the discrete manufacturing industries in an ERP is to support and reveal the history to quickly estimate and submit the quote to the customer to bag the orders, then fine-tune it with Cost of Goods Sold (COGS). For more than a decade the pricing and cost calculations are maintained and managed with a spreadsheet, and the limitations in urging the need to automate with

a comprehensive solution not only to estimate and compare, additionally to empower the engineers to quickly submit the competitive quote to the customers.

Demand:

Material specifications, in house regular production processes, special production processes (either in-house or out-sourced), machine tools trials and selection, inbound and outbound logistics, pricing conditions, vendor

Estimation, Costing & COGs:

managed inventory, payment terms and customer account relationship management are the few imperative combinations that sum up the estimation and costing complexity with high variability to prepare the quote and submit on time to bag the orders. (earlier quote Submission has higher probability to bag the order than on-time submission)

Stir:

As the challenge complexity increases along with the different customer variability, the estimation breakdown elements and structure further agitates the challenge to the next degree. In addition to this when the sale is realised the COGS to the original or revised estimate is essential to know the profitability concerning the line item (part or product)

agitates the business environment between manufacturing operations with Finance and Control functions (Tug of War to conceive and compensate)

Key:

The pioneer SAP Business One partner, Zyle Software solutions designed a configurable add-on solution to meet every discrete

manufacturing estimation and costing legacy in a simplified manner with the following important variables and parameters along with history representations, suggestions and recommendations to submit the quote at the earliest possible.

- Product / Part Group
- Product / Part Nomenclature
- Material Specs and Approved Alternatives
- BOM and Routing PFD's
- Special Processes
- Yield
- Tools and Consumables
- Gauges and Instruments
- Conformance to Quality Cost
- Non-Conformance to Quality Cost

- Swarf recovery

- Rejection Rate



As the production run begins and sale is realised the holistic comparison of planned vs actual cost is revealed

and alerts the respective functional heads to initiate correction and corrective actions. (Powers Management with COGS actions to improve the profitability)

KPI's & Measurements:

Demand

Usually, every organization sets the Key Performance indicators with lagging or leading ones to drive the business performance in the required direction and wish it realizes the results in terms of productivity improvement, cost reduction, improved cash flows, better asset utilization, lower breakdowns, higher availability, reduce purchase pricing variations, and much more.

Stir:

In the real world, the reviews and actions take place as long as 12 months and some exceptions do it as short as one month (4 weeks), however, the frequent alignment of the indicators to the metrics are very little. These

demands tweaking the KPI with Business Plan is a challenging task as time progress to sustained profitability.

KPI & MRM Key(s):

The SAP Business One Hana built-in analytics and pervasive analytics tools power the

business leaders to set up the KPI with time progression against the business plan quickly and easily to measure and monitor (since the measurement is automated, the analysis is also automated). as the KPI's display on the screen at first (login) and every time (navigate to other transactions), the respective KPI owners watching the trend probability is 100% to initiate the actions, further respective alerts and escalations are made easy to have a quick discussion between peers and leaders.

As we Jump into MRM (Management Review Meetings), at periodical intervals, the time and effort spent for the analysis part of review preparation are zero. and it's

time to evaluate the ideas to implement and see the results with appropriate approvals in the MRM. This facilitates "Actions Speaks Louder Than Words" in the MRM with the KPI Dashboard and relevant actions list with flags and reminders.



Conclusion Note:

Zyple Software solutions continuously making efforts and investing in research and developments in customized add-on solutions to enhance user experience and business legacy reflection in every vertical, to ensure the clients remain competitive in their market segment. Talk to us, let's explore keys to unlock your business potential to remain profitable at all times.





Zyple

SOFTWARE

Address:

**Zyple Software Solution Pvt Ltd
No. 82, 2nd floor, Laxman Layout,
Jambu Savari main road, J. P. Nagar,
8th Phase, Bangalore - 560076**

Contact:

**Ph.No. +91 80- 35000296/97/98/99
e-mail: info@zyplesoft.com
Branches: Kochi, Chennai
Abroad: Abu Dhabi**

www.zyplesoft.com